



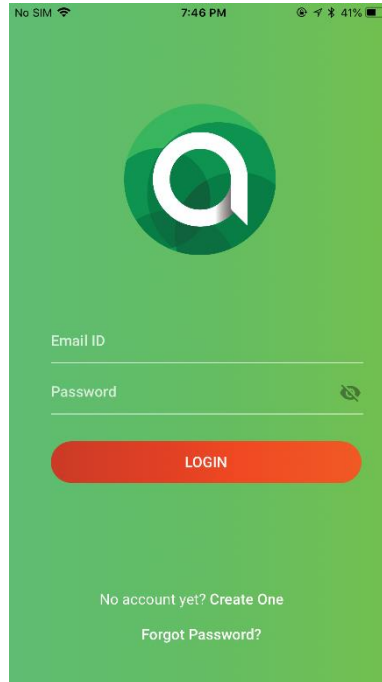
## ALTRO SMART LOCK CALIBRATION GUIDE

Pre-requisites:

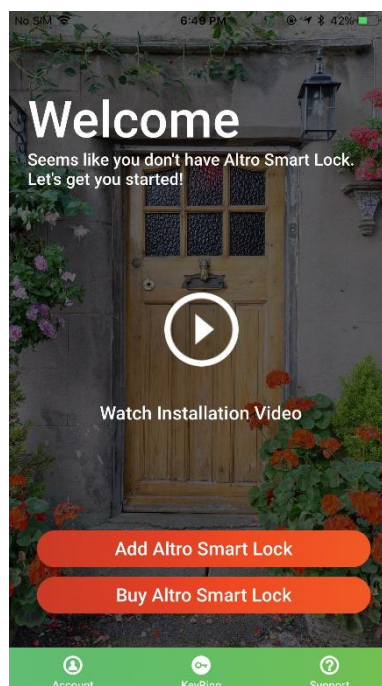
- > Altro Smart Lock installed on your door
- > Altro Smart Lock mobile app

Let's get started.

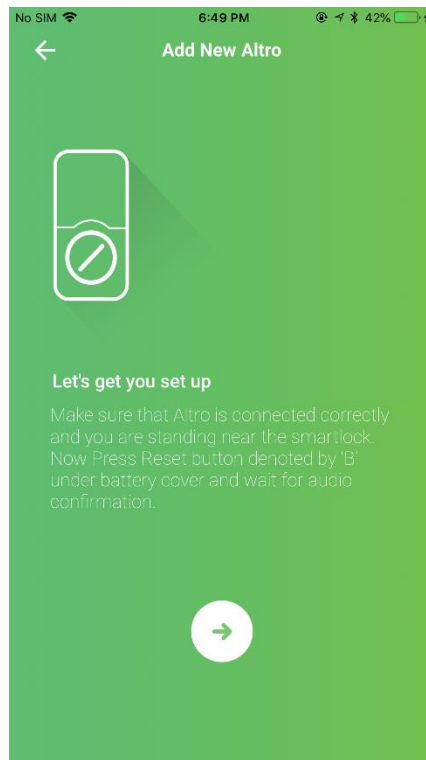
1. Login to Altro Smart mobile app in your phone.




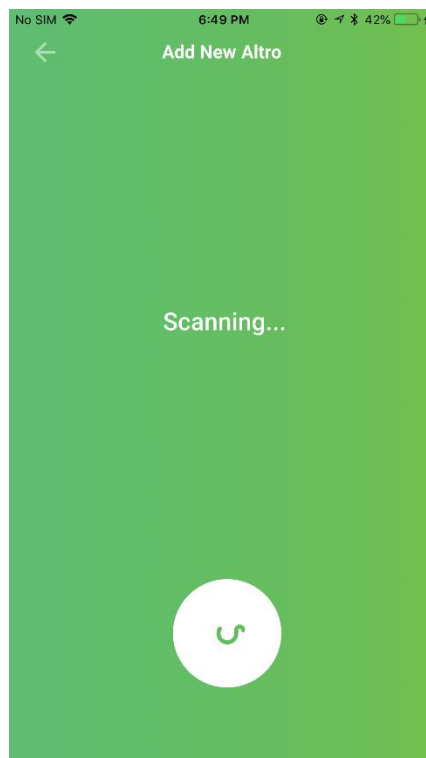
2. Go to Keyring Welcome screen in Altro Smart mobile app and press button "Add Altro Smart Lock". This will take you to Add New Altro screen of the app.




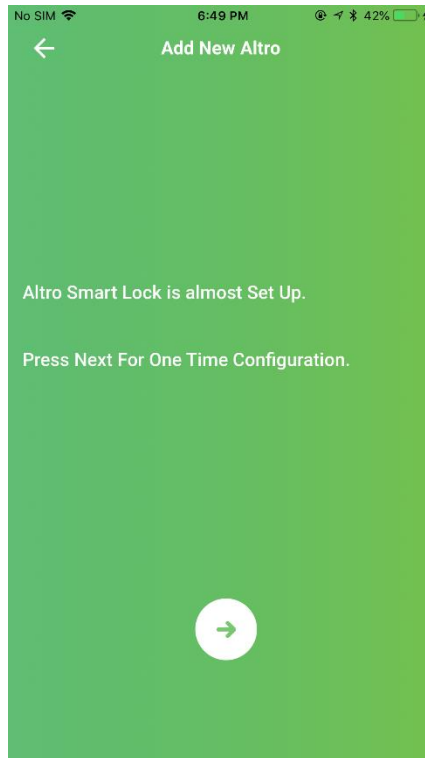
3. Open battery cover and long press button marked 'B' for 5 seconds. You will receive audio feedback "RESET DONE".




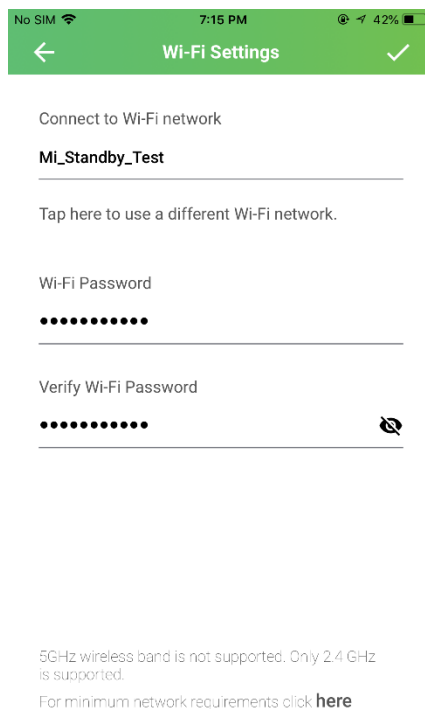
4. In Add New Altro screen, press next button  present on lower half of the screen and app will start scanning for Altro Smart Lock.



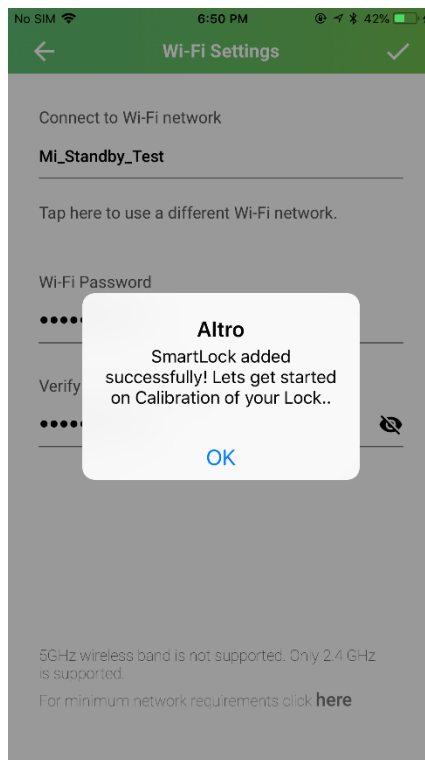
5. Once scanning is complete, press next  for One time Configuration.




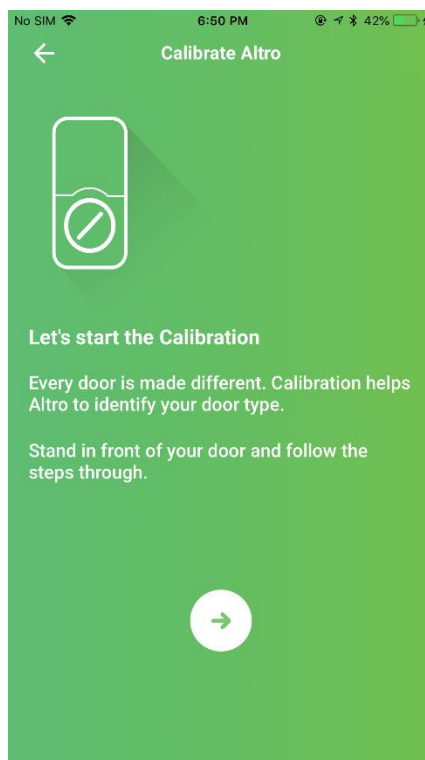
6. Input your Home/Office Wi-Fi details and press Submit button  present on top right corner of your screen. Altro Smart lock will be connected to this Wi-Fi network for all operations.



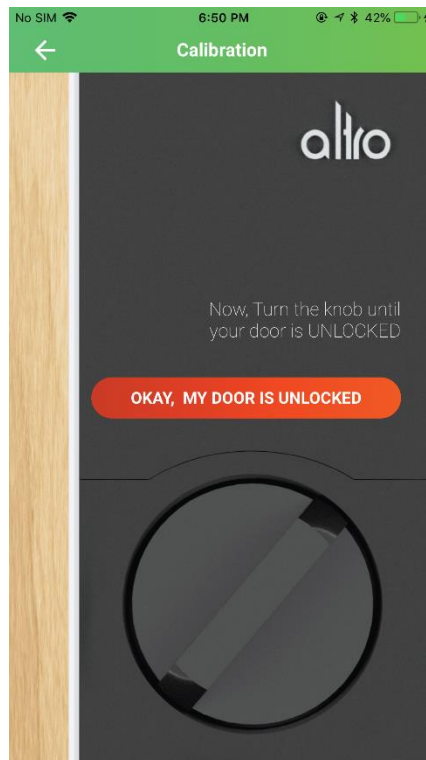
7. Your Altro Smart lock is now associated with your account. Press OK.



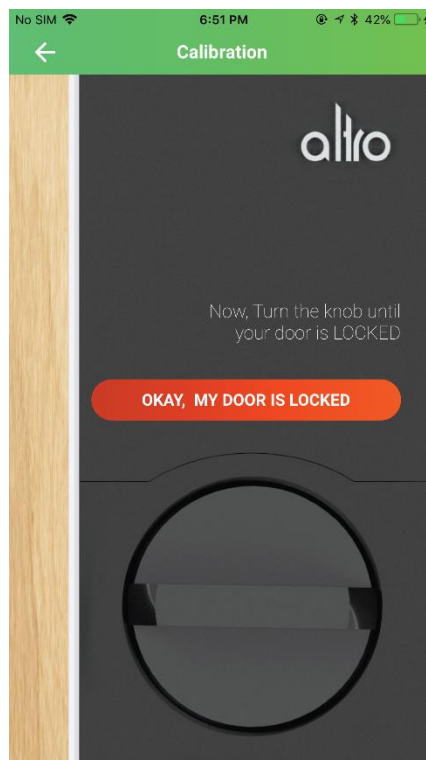
8. Stand in front of your door and press next  button present in Calibrate Altro screen.



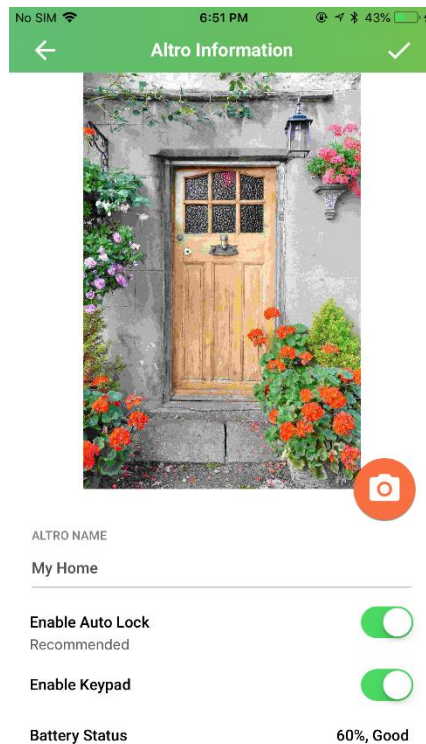
9. Now position your latch in Unlock position and click button "OKAY, MY DOOR IS UNLOCKED"



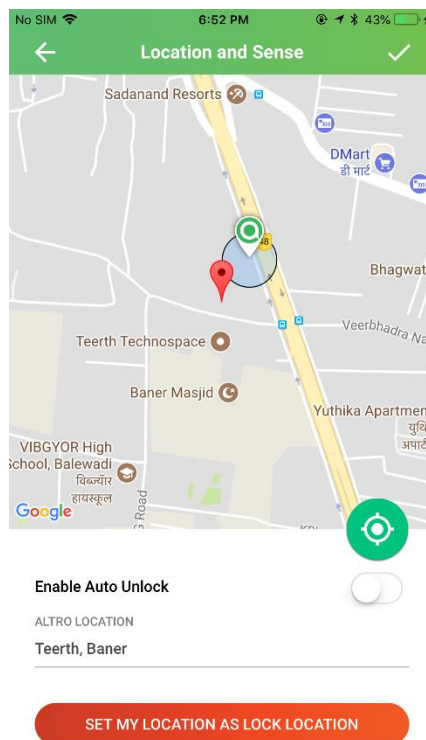
10. Now position your latch in Lock position and click button "OKAY, MY DOOR IS LOCKED"



11. Add name and picture of your home in Altro Information screen to personalise your Altro Smart lock. Click Submit button  to save these settings.



12. Next, set location of your lock and click Submit button . Make sure to set correct location as this can only be done during setup process.



13. Voila! Altro Smart Lock is setup and ready to use.

